

# Responsible Investment - The Zurich approach

Zurich Life



# Why Responsible Investment at Zurich?

To be successful  
our business must...



1

create sustainable  
value for all our  
stakeholders

2

focus on long-term  
success over short  
term gains

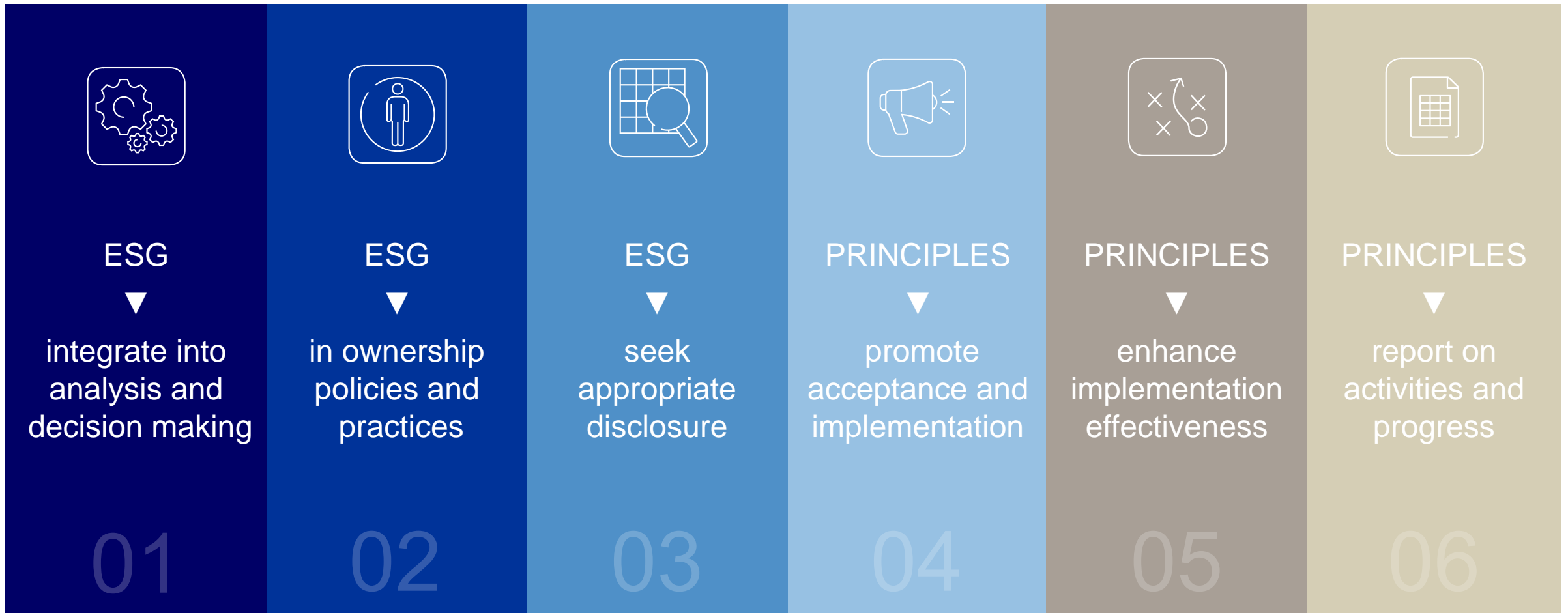
## Doing well and doing good...

- not philanthropy
- Long-term value
- positive impact on society



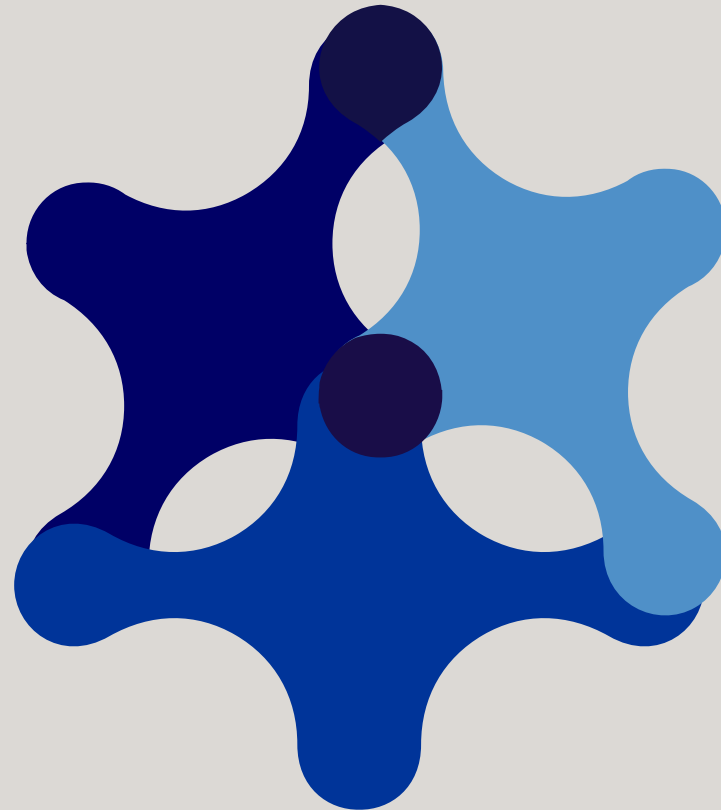
# Principles for Responsible Investment

Continuously implementing our Responsible Investment strategy since 2012



# Doing well and doing good

**Impact Investing**



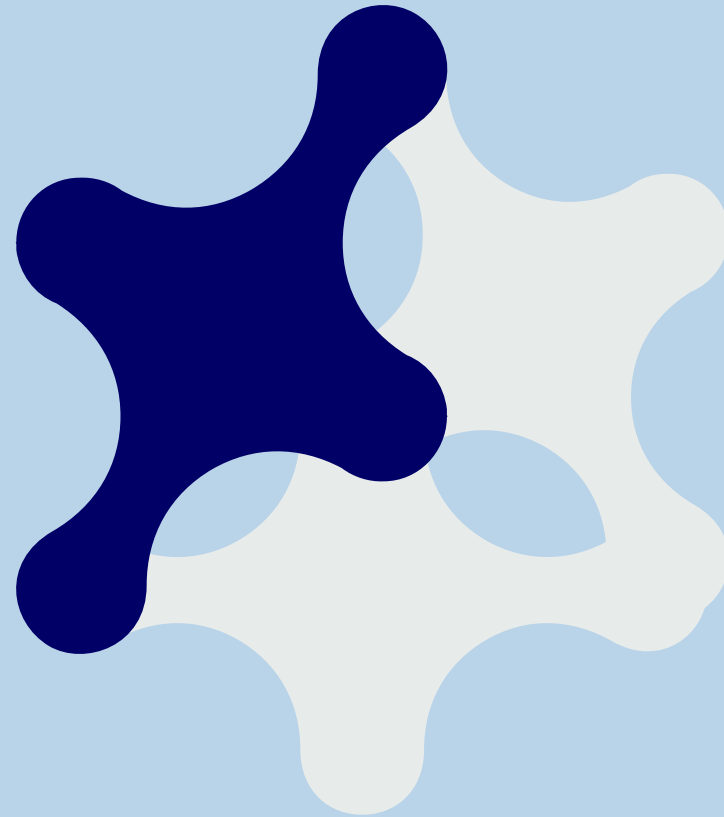
**ESG Integration**

**Advancing Together**

# How we define and practice impact investing

## Impact Investing

- ✓ Intentionality
- ✓ Measurability
- ✓ Profitability



## ESG Integration

Advancing Together

# Zurich's impact objectives



## Mitigate environmental risks

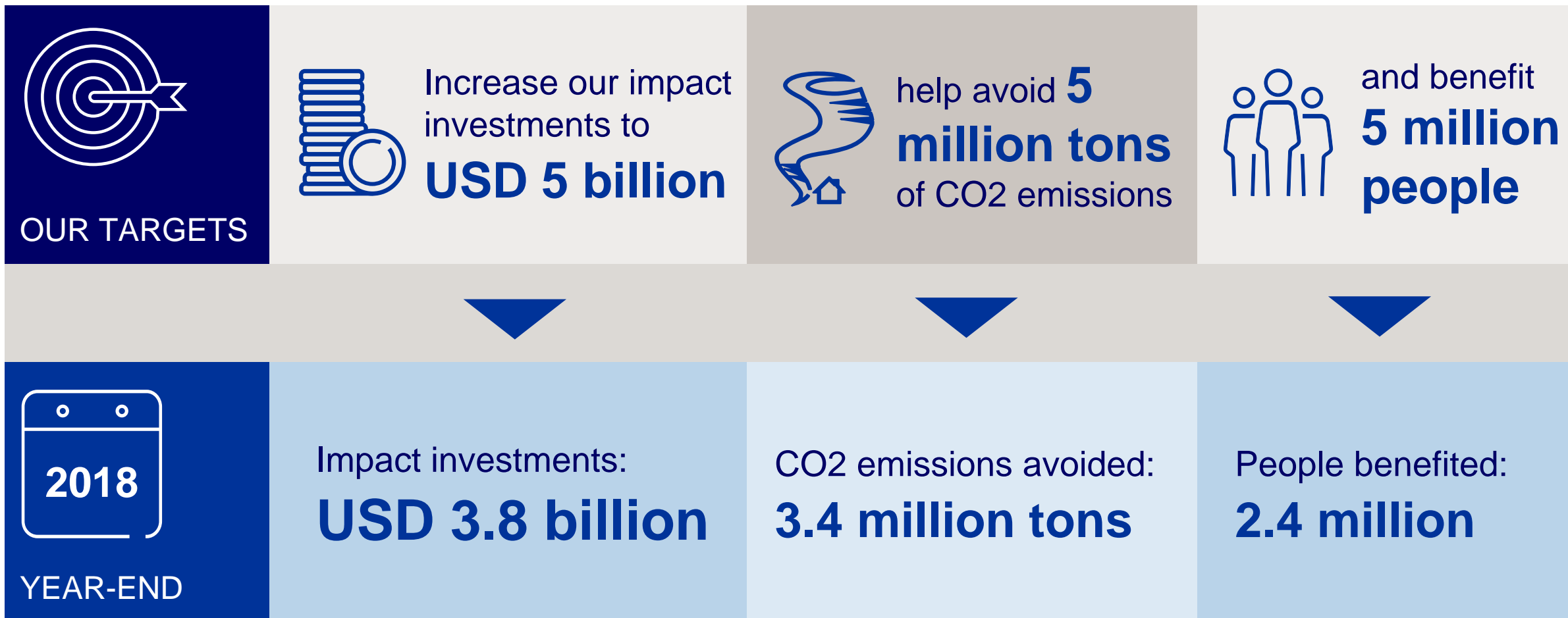
- Support low-carbon economy
- Encourage environmentally friendly technologies



## Increase community resilience

- Build “community capital”
- Address population needs that lack traditional access to capital

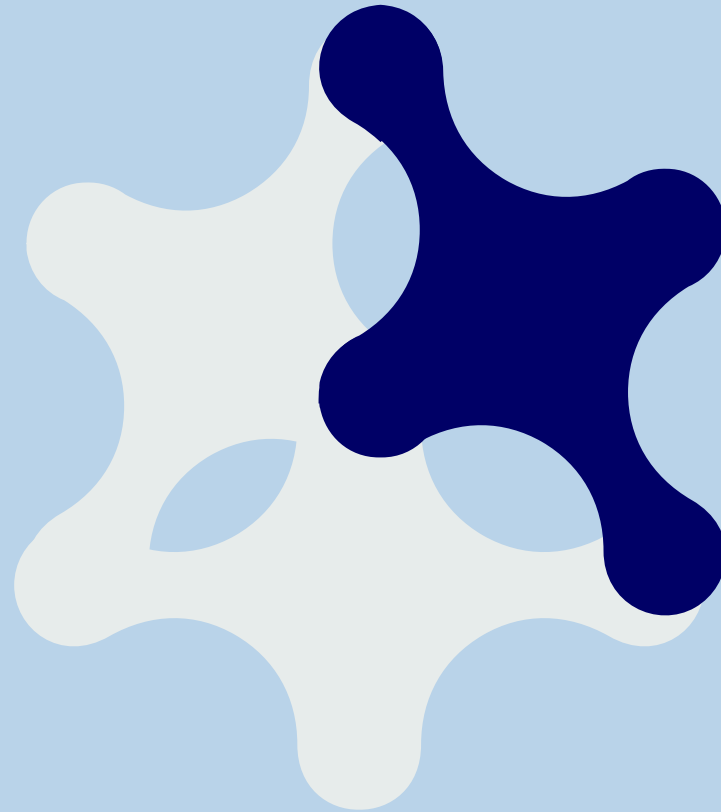
# Zurich sets ambitious impact targets





# Capturing ESG-related risks and opportunities

Impact Investing



**ESG Integration**

- ✓ Training
- ✓ Information
- ✓ Process integration
- ✓ Active ownership

Advancing Together

# What is ESG?

## Examples of ESG Factors



### Environmental

- Natural resource use
- Carbon emissions
- Energy efficiency
- Pollution/waste
- Sustainability initiatives



### Social

- Workforce health/safety
- Diversity/opportunity policies
- Employee training
- Human rights
- Privacy/data security
- Community programs

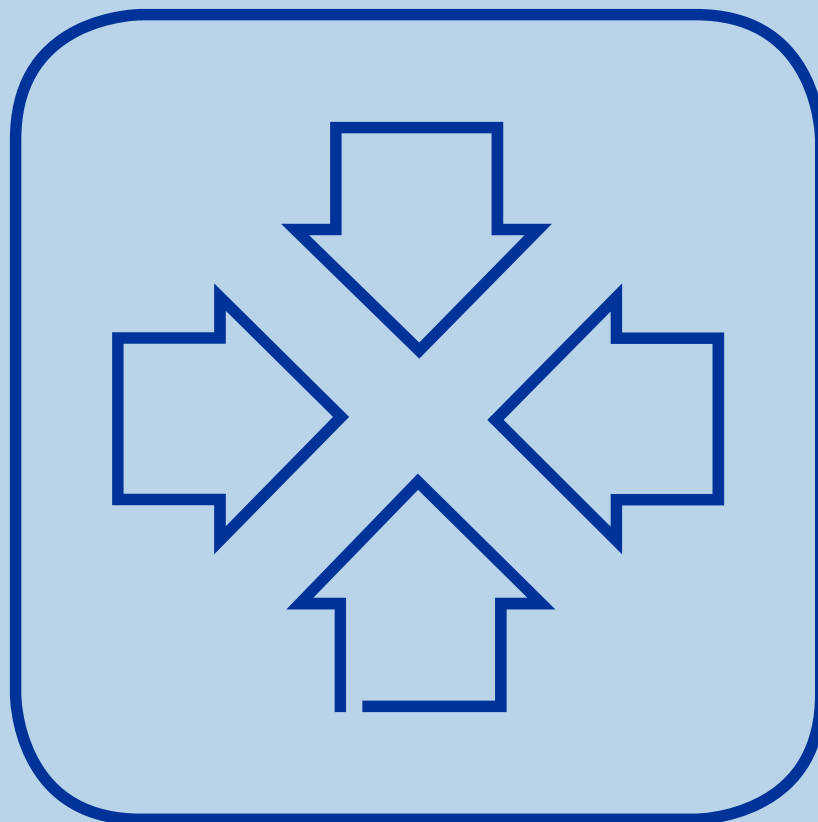


### Governance

- Board independence
- Board diversity
- Shareholder rights
- Management compensation policy
- Business ethics

# ESG integration

What we do



## Training

Online modules for investment managers

## Access to information

MSCI is our ESG analysis and rating provider

## Process

Integrate security selection, linked to Bloomberg system

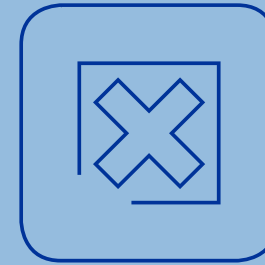
## Active ownership

Engage with companies, proxy voting (Glass Lewis)



## What it is

- Another valuable input to security selection
- An economic approach, dependent on price



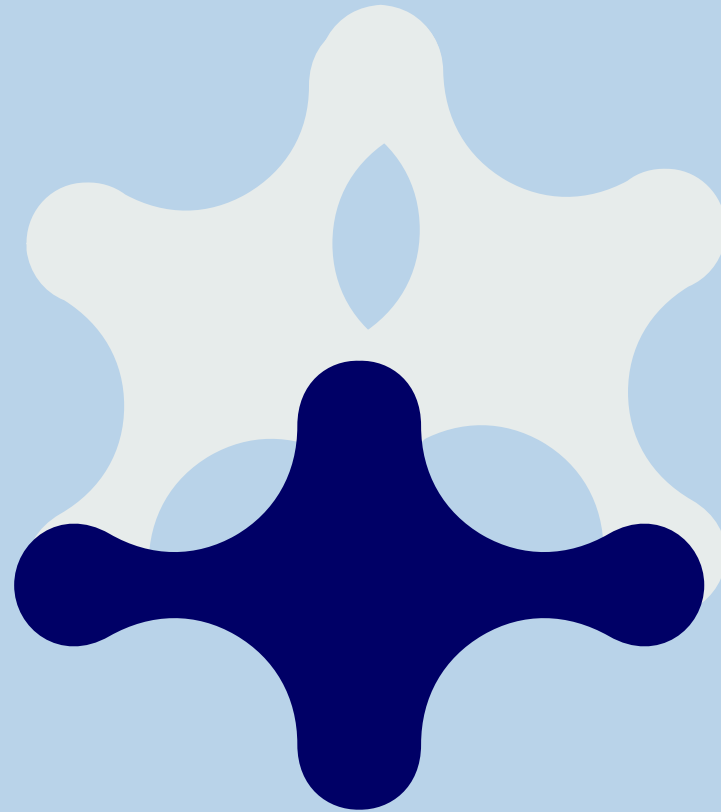
## What it isn't

- A guarantee of superior returns
- An exclusionary approach for low ESG-rated companies

# How can Responsible Investment make a bigger difference?

Impact Investing

ESG Integration



✓ Collaboration

**Advancing Together**

✓ Innovation

# Excluding coal from Zurich business

## Taking the initiative



- Zurich supports Paris Accord on combatting global warming
- Carbon not priced sufficiently to discourage the use of coal
- Facilitate and accelerate the move to a low carbon economy

**2018**

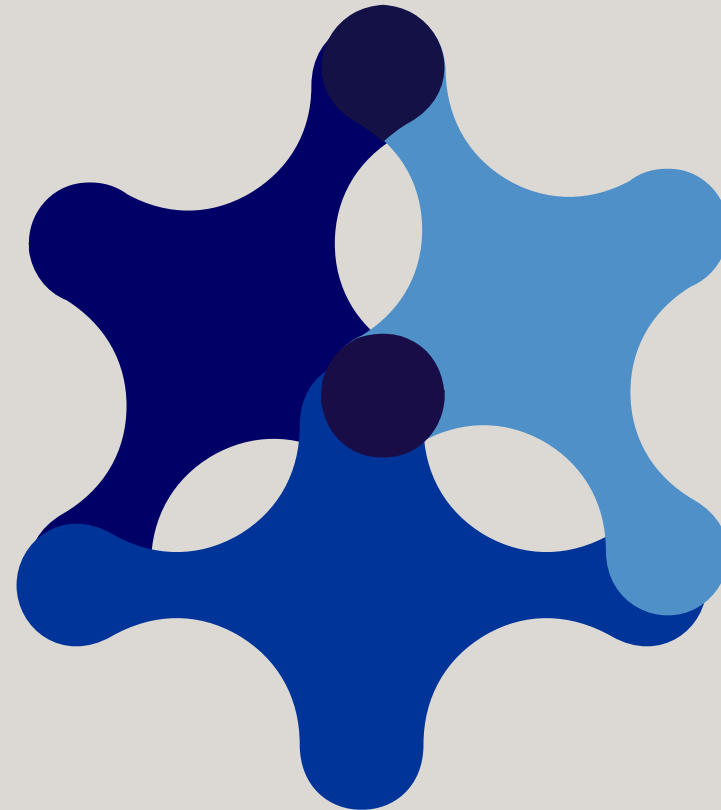
Selectively exclude coal related companies from Group underwriting and investing activities

**2019**

Extend coal exclusions to policyholder funds

# Responsible investment at Zurich

**Impact Investing**



**ESG Integration**

**Advancing Together**



Doing well  
and doing  
good.

# Collaborating to advance Responsible Investment

## EMPEA

Zurich is a member of the Emerging Market Private Equity Association's Impact Investing Council.

## IFC

Founding Member to the Operating Principles for Impact Management

## Reef Trust

In 2016 Zurich collaborated with the Reef Trust Panel and the Australian ministry of the Environment to brainstorm innovative financial mechanisms for conservation finance

## PRI

Principles for Responsible Investment

## Forum per la Finanza Sostenibili

In 2015 Zurich joined FFS and has been actively supporting workshops and initiatives.

## Green Bond Principles

Voluntary process guidelines that recommend transparency and disclosure and promote integrity in the development of the Green Bond market.

## ILG

Proud to be a founding member of The Investment Leaders Group

## UNEP

United Nations Environment Programme, we are part of the Inquiry into the Design of a Sustainable Financial System

## GIIN

Member of their Investors' Council, a platform for impact investors to connect, share ideas and leverage the GIIN's resources and expertise

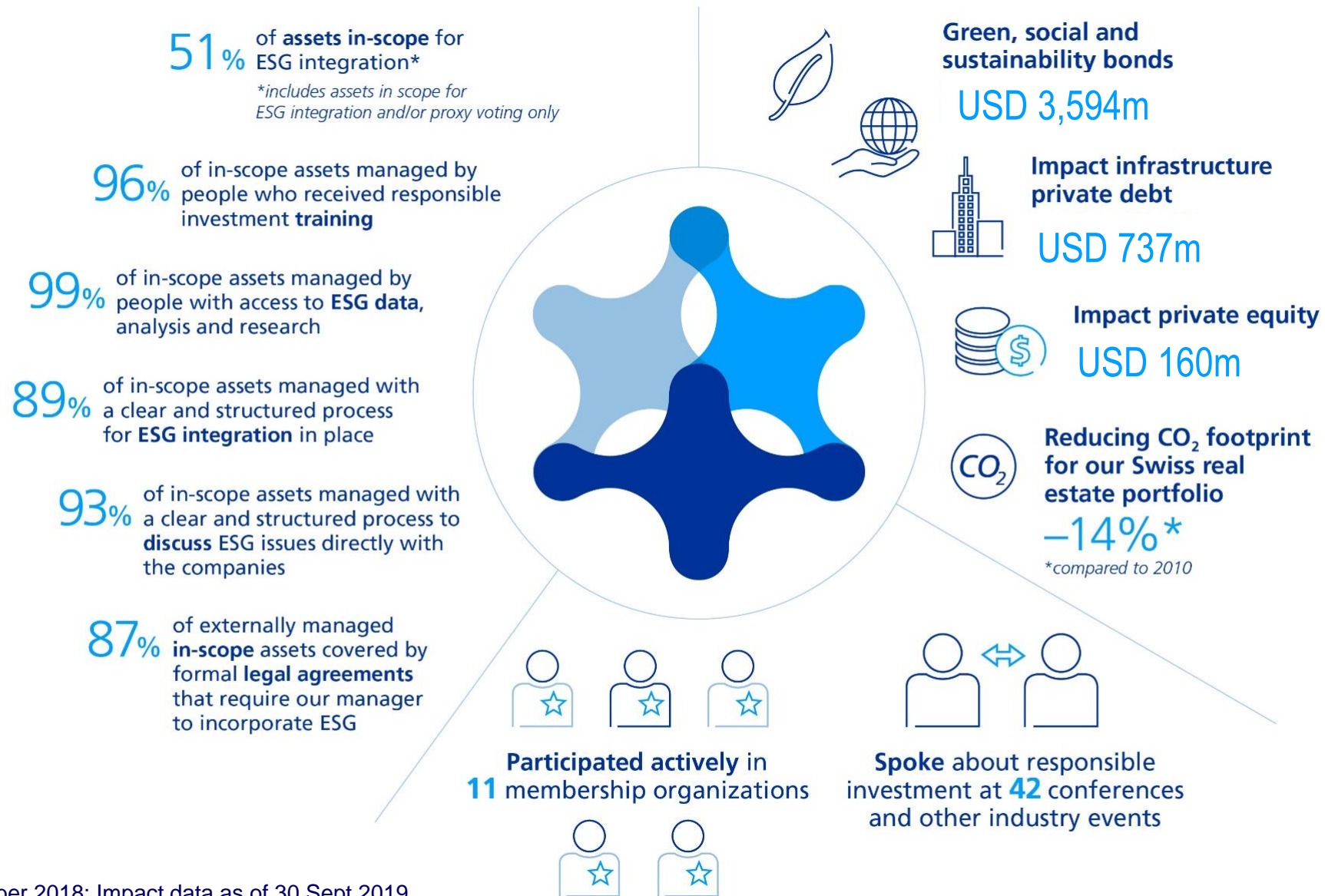
## ClimateWise

Global insurance industry's leadership group driving action on climate change risk.





# Responsible Investment KPIs



Source: MSCI. The MSCI information may only be used for your internal use, may not be reproduced or disseminated in any form and may not be used as a basis for or a component of any financial instruments or products or indices. None of the MSCI information is intended to constitute investment advice or a recommendation to make (or refrain from making) any kind of investment decision and may not be relied on as such. Historical data and analysis should not be taken as an indication or guarantee of any future performance analysis, forecast or prediction. The MSCI information is provided on an “as is” basis and the user of this information assumes the entire risk of any use made of this information. MSCI, each of its affiliates and each other person involved in or related to compiling, computing or creating any MSCI information (collectively, the “MSCI Parties”) expressly disclaims all warranties (including, without limitation, any warranties of originality, accuracy, completeness, timeliness, non-infringement, merchantability and fitness for a particular purpose) with respect to this information. Without limiting any of the foregoing, in no event shall any MSCI Party have any liability for any direct, indirect, special, incidental, punitive, consequential (including, without limitation, lost profits) or any other damages. ([www.msci.com](http://www.msci.com))

The Global Industry Classification Standard (“GICS”) was developed by and is the exclusive property and a service mark of MSCI Inc. (“MSCI”) and Standard & Poor’s, a division of The McGraw-Hill Companies, Inc. (“S&P”) and is licensed for use by [Licensee]. Neither MSCI, S&P nor any third party involved in making or compiling the GICS or any GICS classifications makes any express or implied warranties or representations with respect to such standard or classification (or the results to be obtained by the use thereof), and all such parties hereby expressly disclaim all warranties of originality, accuracy, completeness, merchantability and fitness for a particular purpose with respect to any of such standard or classification. Without limiting any of the foregoing, in no event shall MSCI, S&P, any of their affiliates or any third party involved in making or compiling the GICS or any GICS classifications have any liability for any direct, indirect, special, punitive, consequential or any other damages (including lost profits) even if notified of the possibility of such damages.

Source ICE Data Indices, LLC (“ICE DATA”), is used with permission. ICE DATA, ITS AFFILIATES AND THEIR RESPECTIVE THIRD PARTY SUPPLIERS DISCLAIM ANY AND ALL WARRANTIES AND REPRESENTATIONS, EXPRESS AND/OR IMPLIED, INCLUDING ANY WARRANTIES OF MERCHANTABILITY OR FITNESS FOR A PARTICULAR PURPOSE OR USE, INCLUDING THE INDICES, INDEX DATA AND ANY DATA INCLUDED IN, RELATED TO, OR DERIVED THEREFROM. NEITHER ICE DATA, ITS AFFILIATES NOR THEIR RESPECTIVE THIRD PARTY PROVIDERS SHALL BE SUBJECT TO ANY DAMAGES OR LIABILITY WITH RESPECT TO THE ADEQUACY, ACCURACY, TIMELINESS OR COMPLETENESS OF THE INDICES OR THE INDEX DATA OR ANY COMPONENT THEREOF, AND THE INDICES AND INDEX DATA AND ALL COMPONENTS THEREOF ARE PROVIDED ON AN “AS IS” BASIS AND YOUR USE IS AT YOUR OWN RISK. ICE DATA, ITS AFFILIATES AND THEIR RESPECTIVE THIRD PARTY SUPPLIERS DO NOT SPONSOR, ENDORSE, OR RECOMMEND ZURICH LIFE ASSURANCE PLC, OR ANY OF ITS PRODUCTS OR SERVICES.

Zurich Life Assurance plc is regulated by the Central Bank of Ireland

**Warning: Past performance is not a reliable guide to future performance.**  
**Warning: Benefits may be affected by changes in currency exchange rates.**  
**Warning: The value of your investment may go down as well as up.**  
**Warning: If you invest in this product you may lose some or all of the money you invest.**