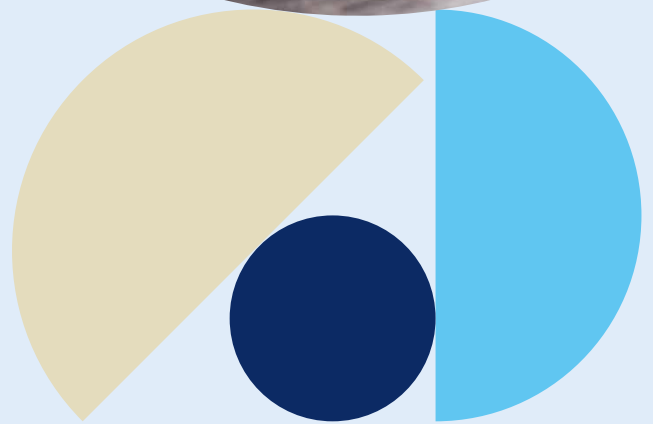


Protect you and your family from the risk of serious illness

Nobody likes to think about the risk of serious illness, but unfortunately, for many people it can have far reaching consequences.



If you suffer from a serious illness such as Cancer, a Heart Attack, or a Stroke, it could prevent you from working and you could find yourself struggling financially at a time when money should be the last thing on your mind.

Take a moment to consider the financial problems a serious illness could bring to you and your family. Ask yourself:

- Will I have the money to help me access the best medical care and assist my recovery?
- Could my employment and income be impacted by a serious illness?
- Will I have enough money to pay my mortgage or rent every month?
- What about my family? If I am unfortunate to suffer from a serious illness, could this impact their day to day living, education and future?

That's why you should consider protecting you and your family with Serious Illness Cover from Zurich.



What is serious illness cover?

Serious Illness Cover is a type of insurance policy that pays out a cash lump sum if you get one of the many serious illnesses covered by the plan – illnesses such as Cancer, a Heart Attack, or a Stroke*.

A cash lump sum paid to you could help remove some of the financial and emotional stress associated with a serious illness – to enable you to take the time off work, to help pay for specialist treatment and/or even to help cover day-to-day household bills such as childcare.

Serious Illness cover can be set up so that it covers both you and your partner – and if you have children, they are also automatically covered should they suffer a serious illness*. You decide how much financial cover you need, and the cost of the plan is based on criteria such as your age, smoker status, and medical history.

* Claims are subject to policy terms and conditions.
Please see the policy document for the full definition of illnesses.

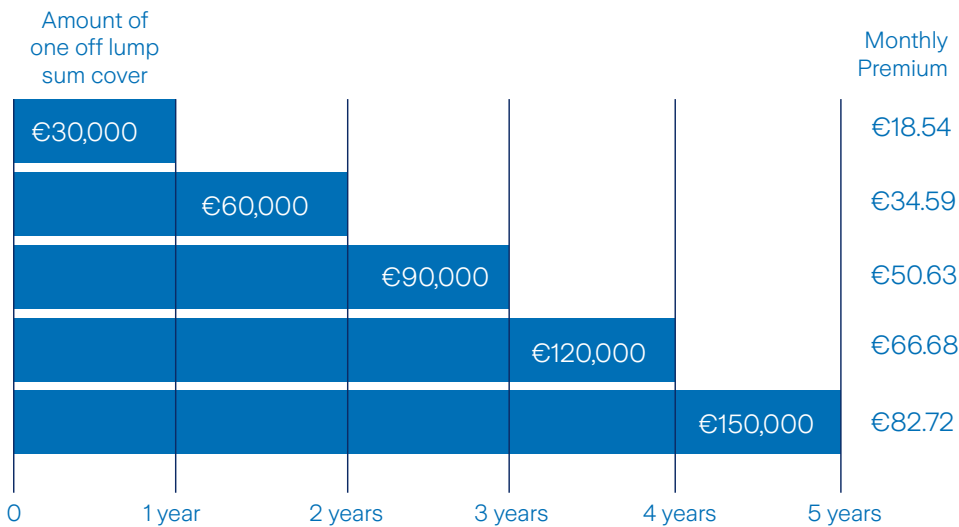


Even a little cover can stretch a long way

Even a small amount of serious illness cover can go a long way.

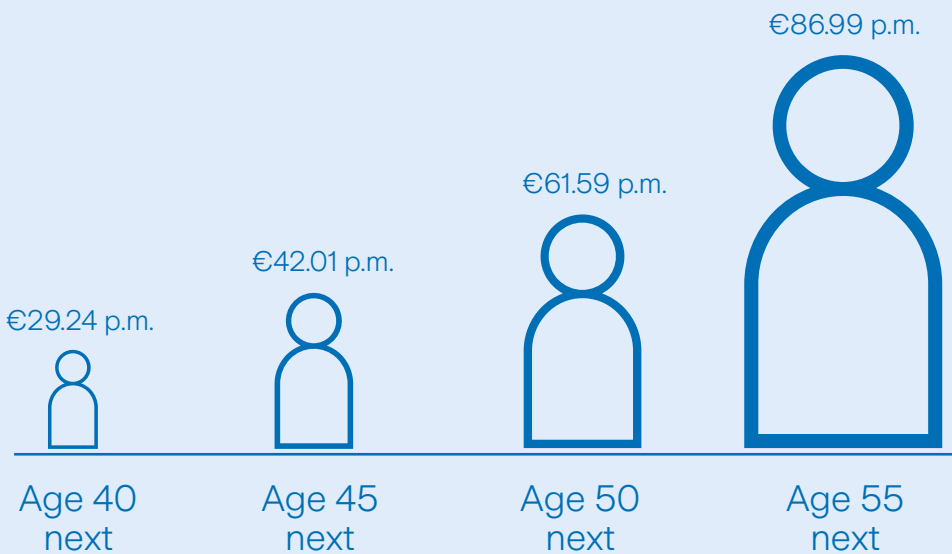
If you needed **€2,500 every month (€30,000 in a year)** to cover your household expenses, the good news is that it doesn't have to cost the earth. The table below shows how far even a small amount of cover could go and the monthly cost.

Funding for your current lifestyle



Source: Zurich Life, May 2021. Based on age 40 next, non-smoker with serious illness cover for a term of 20 years. A government insurance levy (1% as at May 2021 and may change in the future) applies to this policy. These sample premiums do not include this levy.

The younger you are, the less it costs



Source: Zurich Life, May 2021. Based on non-smoker with €50,000 serious illness cover for a term of 20 years. A government insurance levy (1% as at May 2021 and may change in the future) applies to this policy. These sample monthly premiums do not include this levy.



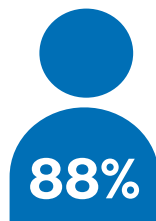
When it comes to paying claims, Zurich have a strong reputation

In 2020, we paid more than **€19 million** in Serious Illness claims. Cancer is by far the most common reason for claiming, accounting for **74% of female claims** and **63% of male claims**.

Heart related illnesses account for **23% of male claims** with Zurich. However, for females, it's only **10%**.



of all female claims were related to cancer

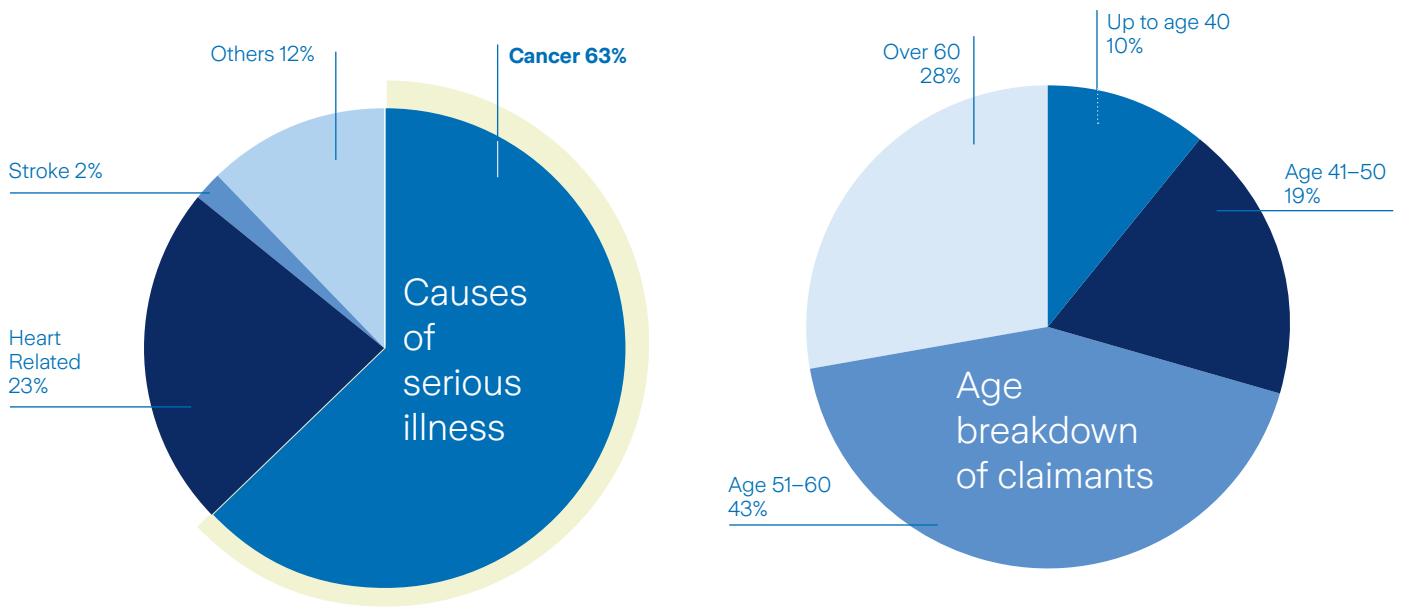


of all male claims were related to Cancer, Heart and Stroke

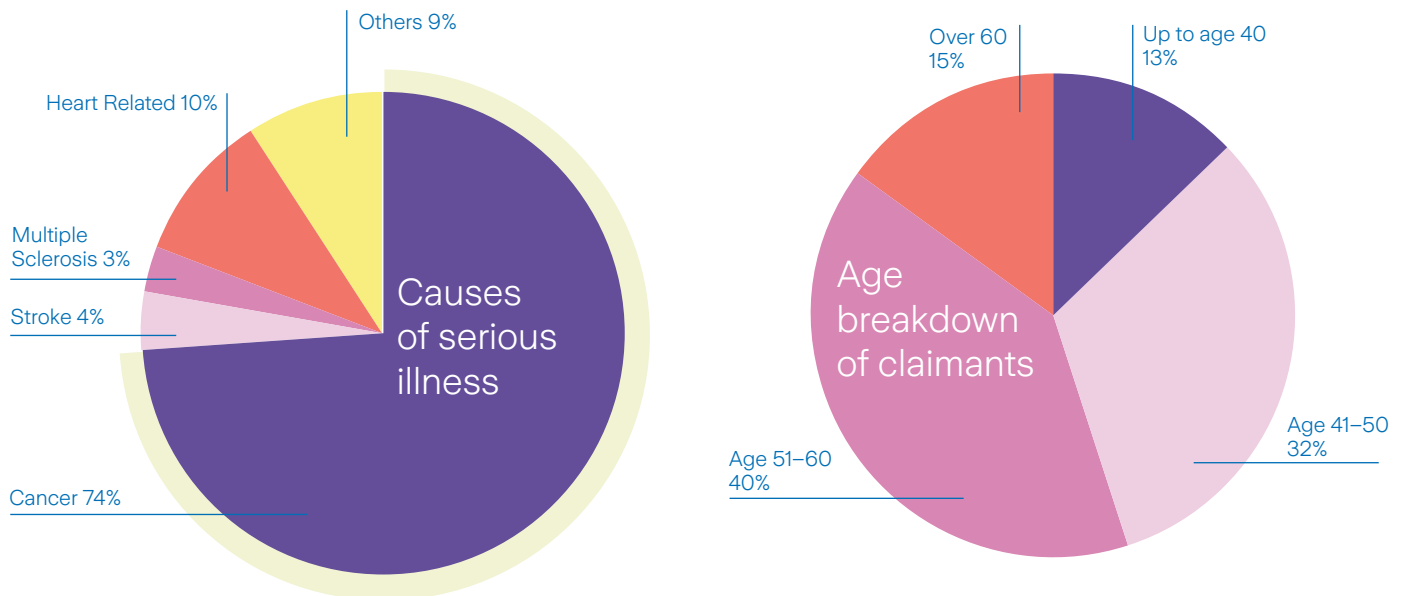
Source: Zurich Life, Claims Experience May 2021



2020 Serious Illness Claims – Males



2020 Serious Illness Claims – Females



Heart related illnesses account for **23% of male** claims with Zurich. However, for females, it's only **10%**.

At Zurich, **cancer accounts for 67%** of all Serious Illness claims.



What Serious Illnesses do we cover?

We provide cover for over 70 different serious illnesses including the three most common: Cancer, Heart Attack and Stroke. In fact, these three illnesses alone accounted for over 80% of all our claims.* Also, we think our Cancer, Heart Attack and Stroke definitions are the strongest in Ireland.* What this means is that we expect to pay out on more of these claims than anyone else – so you can have peace of mind that you are covered with Zurich.

Enhancing your protection with our partial payment illnesses.

While many serious illnesses are wholly life changing, others are less so. To ensure you have the fullest protection, our serious illness plans cover a wider range of serious illnesses by way of a 'partial payment'. The payout for these is 50% of the amount of cover up to a maximum of €15,000.

Cancer related illnesses

Full payment illnesses covered:

- Cancer – excluding less advanced cases

Partial Payment Illnesses covered:

- Cancer in situ – with surgery
- Early Stage Bladder Cancer – of specified advancement
- Early Stage Thyroid Cancer – of specified advancement
- Gastrointestinal Stromal Tumour (GIST) of Low Malignant Potential – with surgery
- Low Level Prostate Cancer – with Gleason score between 2 and 6 and with specific treatment
- Neuroendocrine Tumour of Low Malignant Potential – with surgery
- Ovarian Tumour of Borderline Malignancy / Low Malignant Potential – with surgical removal of an ovary
- Pituitary tumour – resulting in permanent symptoms or surgery

Heart, Cardiac and Blood Disorders

Full payment illnesses covered:

- Aorta Graft Surgery
- Aplastic Anaemia – of specified severity
- Balloon Valvuloplasty
- Cardiac Arrest – with insertion of a defibrillator
- Cardiomyopathy – permanent and of specified severity
- Coronary Artery Bypass Graft
- Heart Attack – with clinical proof
- Heart Structural Repair – with thoracotomy
- Heart Valve Replacement or Repair – with surgery to divide the breastbone
- Peripheral Vascular Disease – with bypass surgery
- Primary Pulmonary Hypertension – of specified severity
- Pulmonary Artery Surgery – with surgery to divide the breastbone

Partial Payment Illnesses covered:

- Angioplasty for Coronary Artery Disease**
- Aortic Aneurysm – with endovascular repair
- Carotid Artery Stenosis – treated by Endarterectomy or Angioplasty
- Implantable Cardioverter Defibrillator (ICD) for Primary Prevention of Sudden Cardiac Death
- Peripheral Vascular Disease – treated by angioplasty
- Permanent Pacemaker Insertion

*Source: Zurich Life, May 2021.

Partial payouts for Angioplasty for Coronary Artery Disease are subject to the lesser of 50% of the Serious Illness sum insured and €5K (or €100K depending on the number of arteries treated).

Stroke Related

Full payment illnesses covered:

- Stroke – resulting in specified symptoms
- Spinal Stroke – resulting in permanent symptoms

Brain Related (Neurological, Musculature & illness associated with the brain)

Full payment illnesses covered:

- Bacterial Meningitis – resulting in permanent symptoms
- Benign Brain Tumour – resulting in permanent symptoms
- Brain Injury Due to Anoxia/Hypoxia – resulting in permanent symptoms
- Coma – with associated permanent symptoms
- Creutzfeldt-Jakob Disease (CJD) – resulting in permanent symptoms
- Dementia (including Alzheimer's Disease) – resulting in permanent symptoms
- Encephalitis – resulting in permanent symptoms
- Motor Neurone Disease and Specified Diseases of the Motor Neurones – resulting in permanent symptoms
- Multiple Sclerosis
- Paralysis
- Parkinson Plus Syndromes – resulting in permanent symptoms
- Parkinson's Disease – resulting in permanent symptoms
- Traumatic Brain Injury – resulting in permanent symptoms

Partial Payment Illnesses covered:

- Brain Abscess – drained via craniotomy
- Cerebral Aneurysm – with surgery or radiotherapy
- Cerebral Arteriovenous Malformation – treated by craniotomy, stereotactic radiosurgery or endovascular repair

Major Organ (other than Heart/Brain) & Artery Related

Full payment illnesses covered:

- Kidney Failure – requiring permanent dialysis
- Liver Failure – end stage
- Major Organ Transplant – from another donor
- Pneumonectomy – removal of a complete lung
- Severe Lung Disease - of specified severity

Partial Payment Illnesses covered:

- Central Retinal Artery Occlusion or Central Retinal Vein Occlusion – resulting in permanent visual impairment
- Liver Resection
- Single Lobectomy – removal of a complete lobe of a lung



Body Related

Full payment illnesses covered:

- Benign Spinal Cord Tumour – resulting in permanent symptoms or requiring surgery
- Blindness – permanent and irreversible
- Deafness – permanent and irreversible
- Loss of Independent Existence (based on ‘Activities of Daily Living’)
- Loss of Speech – permanent and irreversible
- Loss of one limb – permanent physical severance
- Permanent Total Disablement (based on ‘Activities of Daily Work’) – cover ceases under this serious illness definition when the life insured reaches age 65
- Severe Crohn’s Disease – with persistent symptoms that has not responded to surgical intestinal resection
- Third Degree Burns – of specified severity

Partial Payment Illnesses covered:

- Crohn’s Disease – treated with surgical intestinal resection
- Cystectomy – complete removal of the urinary bladder
- Severe/3rd Degree Burns – covering at least 10% of the body’s surface
- Significant Visual Impairment – permanent and irreversible
- Surgical Removal of one Eye
- Ulcerative Colitis – treated with total colectomy

Other

Full payment illnesses covered:

- HIV Infection – caught in the EU, UK, North America, Australia or New Zealand from a blood transfusion, a physical assault or at work
- Intensive Care – requiring mechanical ventilation for ten consecutive days
- Necrotising Fasciitis
- Systemic Lupus Erythematosus (SLE) – of specified severity
- Terminal Illness to end of Policy Term (on Accelerated Serious Illness only)

Partial Payment Illnesses covered:

- Diabetes Mellitus – Type 1
- Serious Accident Cover – resulting in at least 28 consecutive days in hospital
- Syringomyelia or Syringobulbia – of specified severity



Important Note

Zurich’s Serious Illness Cover is subject to terms and conditions which are contained in the policy document. It is important to note that not all serious illnesses are covered under this policy. In order to make a valid claim policy specific conditions must be met and certain exclusions apply. You should refer to the policy document which is available on request from Zurich.



If you think that serious illness could put you or your finances at risk, then you should speak to a financial broker or advisor and talk to them about cover from Zurich.

Zurich Life Assurance plc

Zurich House, Frascati Road, Blackrock, Co. Dublin, A94 X9Y3, Ireland.

Telephone: 01 283 1301 Fax: 01 283 1578 Website: www.zurich.ie

Zurich Life Assurance plc is regulated by the Central Bank of Ireland.

Intended for distribution within the Republic of Ireland.

GR: 5777 Print Ref: ZL LSA 5777 0621

