

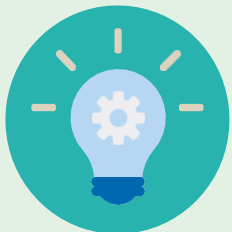
## Strong jobs, stronger jitters

Major global markets ended last week lower. Investors entered the week focused on Friday's US nonfarm payrolls report, which delivered another encouraging signal on the health of the American economy. The US added 172,000 jobs in May, significantly outperforming expectations of 80,000 and reinforcing evidence that the labour market remains resilient despite ongoing economic uncertainty. Meanwhile, the unemployment rate held steady at 4.3%, highlighting continued labour market stability. While stronger employment figures would typically be welcomed by markets, the reaction was notably different. Equities sold off sharply following the release, while the benchmark 10-year Treasury yield climbed to 4.53%. Investors grew concerned that a combination of improving economic momentum and lingering inflation pressures could prompt the Federal Reserve to consider interest rate hikes.

Geopolitical developments also remained firmly in focus. Hopes for a breakthrough in negotiations between the US and Iran faded once again. President Trump has continued to suggest that discussions are nearing a conclusion, however, statements from Iranian officials have painted a less optimistic picture. The Strait of Hormuz remains closed and the ongoing supply shock has intensified concerns over rising energy prices and the potential for a renewed inflationary surge across major economies.

In Europe, equity markets finished the week under pressure as investors digested a mixed set of economic indicators. Manufacturing activity provided a rare bright spot, with the final May PMI rising to 51.6 and exceeding expectations. However, optimism was short-lived as the Composite PMI fell deeper into contraction territory at 48.5, while the services sector remained weak at 47.7. Combined with elevated energy costs and accelerating input price pressures, the data reinforced stagflation concerns and strengthened expectations of a near-term European Central Bank rate increase. In addition, Eurozone unemployment edged up to 6.3% in April from 6.2% the previous month.

In Asia, Japan's Nikkei 225 continued its remarkable run, reaching another record high before profit-taking emerged later in the week. The pullback was amplified after semiconductor giant Broadcom reported revenue that fell short of expectations, temporarily cooling enthusiasm surrounding the global AI-driven technology rally.



### Fact of the week

Stock markets fell sharply on Friday, with the Nasdaq falling 4.2% in one day, its steepest one-day drop since April 2025's "Liberation Day" fallout.

Our regular market information continues on the next page.

### Snapshot



- World Equities
- Corporate Bonds
- Sovereign Bonds
- Gold
- Oil
- Copper

### The week ahead

<b>8 June</b>	Japan GDP data is released.
<b>10 June</b>	US CPI data goes to print.
<b>11 June</b>	The ECB make an interest rate decision.



	1 Week Return 29.05.26 to 05.06.26		Year to Date Return 31.12.25 to 05.06.26	
	Local Currency	Euro	Local Currency	Euro
World	-2.2%	-1.3%	8.0%	9.8%
U.S.	-2.5%	-1.6%	8.1%	9.9%
Europe	-0.5%	-0.5%	6.9%	6.9%
Ireland	-0.4%	-0.4%	0.4%	0.4%
U.K.	-0.3%	-0.1%	6.5%	7.6%
Japan	0.2%	0.5%	18.2%	17.5%
Hong Kong	-4.7%	-3.7%	3.9%	4.9%
Corporate Bonds	-0.4%	-0.4%	-0.2%	-0.2%
Sovereign Bonds	-1.1%	-1.1%	0.1%	0.1%

**Warning: Past performance is not a reliable guide to future performance.**  
**Warning: The value of your investment may go down as well as up.**  
**Warning: Benefits may be affected by changes in currency exchange rates.**  
**Warning: If you invest in this product, you may lose some or all of the money you invest.**

Source: MSCI. The MSCI information may only be used for your internal use, may not be reproduced, or disseminated in any form and may not be used as a basis for or a component of any financial instruments or products or indices. None of the MSCI information is intended to constitute investment advice or a recommendation to make (or refrain from making) any kind of investment decision and may not be relied on as such. Historical data and analysis should not be taken as an indication or guarantee of any future performance analysis, forecast or prediction. The MSCI information is provided on an "as is" basis and the user of this information assumes the entire risk of any use made of this information. MSCI, each of its affiliates and each other person involved in or related to compiling, computing, or creating any MSCI expressly disclaims all warranties (including, without limitation, any warranties of originality, accuracy, completeness, timeliness, non-infringement, merchantability, and fitness for a particular purpose) with respect to this information. Without limiting any of the foregoing, in no event shall any MSCI Party have any liability for any direct, indirect, special, incidental, punitive, consequential (including, without limitation, lost profits) or any other damages. (www.msci.com)

Source ICE Data Indices, LLC ("ICE DATA"), is used with permission. ICE DATA, ITS AFFILIATES AND THEIR RESPECTIVE THIRD-PARTY SUPPLIERS DISCLAIM ANY AND ALL WARRANTIES AND REPRESENTATIONS, EXPRESS AND/OR IMPLIED, INCLUDING ANY WARRANTIES OF MERCHANTABILITY OR FITNESS FOR A PARTICULAR PURPOSE OR USE, INCLUDING THE INDICES, INDEX DATA AND ANY DATA INCLUDED IN, RELATED TO, OR DERIVED THEREFROM. NEITHER ICE DATA, ITS AFFILIATES NOR THEIR RESPECTIVE THIRD-PARTY PROVIDERS SHALL BE SUBJECT TO ANY DAMAGES OR LIABILITY WITH RESPECT TO THE ADEQUACY, ACCURACY, TIMELINESS OR COMPLETENESS OF THE INDICES OR THE INDEX DATA OR ANY COMPONENT THEREOF, AND THE INDICES AND INDEX DATA AND ALL COMPONENTS THEREOF ARE PROVIDED ON AN "AS IS" BASIS AND YOUR USE IS AT YOUR OWN RISK. ICE DATA, ITS AFFILIATES AND THEIR RESPECTIVE THIRD-PARTY SUPPLIERS DO NOT SPONSOR, ENDORSE, OR RECOMMEND ZURICH LIFE ASSURANCE PLC, OR ANY OF ITS PRODUCTS OR SERVICES. Figures are calculated using Total Returns Indices.

#### Zurich Life Assurance plc

Zurich House, Frascati Road, Blackrock, Co. Dublin, A94 X9Y3, Ireland.  
 Telephone: 01 283 1301 Fax: 01 283 1578 Website: www.zurich.ie

Zurich Life Assurance plc is regulated by the Central Bank of Ireland.

#### Equities

- Global stocks finished down -1.3% in euro terms and down -2.2% in local terms last week.
- Year-to-date global markets are up by 9.8% in euro terms and up by 8.0% in local terms.
- The U.S. market, the largest in the world, finished down at -1.6% in euro terms and down at -2.5% in local terms.

#### Fixed Income & FX

- The U.S. 10-year yield finished at 4.5% last week. The German equivalent finished at 3.0%. The Irish 10-year bond yield finished at 3.2%.
- The Euro/U.S. Dollar exchange rate finished at 1.15, whilst Euro/GBP finished at 0.86.

#### Commodities

- Oil finished the week at \$91 per barrel and is up 60.7% year-to-date in euro terms.
- Gold finished the week at \$4,329 per troy ounce and is up 2.2% year-to-date in euro terms.
- Copper finished the week at \$13,490 per tonne and is up 10.4% year-to-date in euro terms.